



# SynEdit 2.0

## Technical Description

### 1 Basics:

---

#### 1.1 Goals:

---

SynEdit 2.0 is an editor to create and maintain electronic questionnaires featuring the style of SynQuest.

SynEdit 2.0 is buildt up of different forms which let you modify the SynQuest Tool.

SynEdit 2.0 contains simple functions to create new tools, to add or remove languages or questionnaires.

#### 1.2 Target:

---

SynEdit 2.0 is targeted to be used by quality managers, auditors, assessors and other personnel. There is no need for having programming background.

### 2 Procedure:

---

#### 2.1 First time usage:

---

2.1.1 Create a new project

2.1.2 Open an existing project

2.1.3 Cancel

#### 2.2 Not first time usage:

---

After opening an existing project or creating a new project with SynEdit you can:

2.2.1 Create a new project

2.2.2 Open a new project

2.2.3 Open the last recent project (is done by default)

2.2.4 Get a list of previous projects

2.2.5 Cancel

## 2.3 When you already opened a project...

There can only be one project opened at the same time. You have the choices of:

- 2.3.1 Open an other project
- 2.3.2 Close the current project
- 2.3.3 Modify the options for the current project

And also the functions for the questionnaire:

- 2.3.4 Open an existing questionnaire
- 2.3.5 Rename an existing questionnaire
- 2.3.6 Add a new, empty questionnaire
- 2.3.7 Add a copy of an existing questionnaire

## 2.4 When you opened a questionnaire...

For each project you can have multiple questionnaires and you can have them opened at the same time. Additionally to the features described in 2.3 you can:

- 2.4.1 Close the questionnaire

Whenever the questionnaire is closed, the questionnaire templates are updated in the background.

## 3 Windows:

### 3.1 Project options

#### 3.1.1 Model

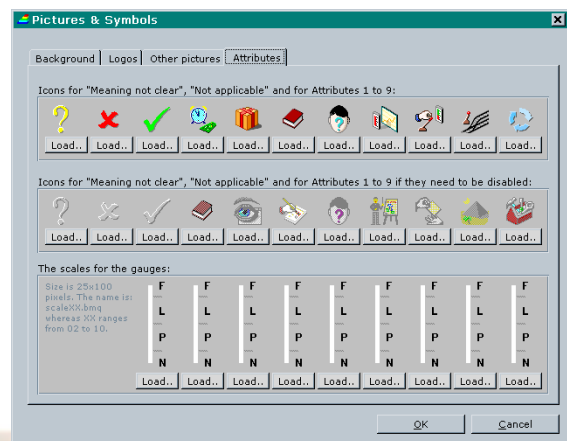
- Number of ratings, number of levels
- Colors for the NPLF scales
- Tresholds for the NPLF scales, etc.

#### 3.1.2 Attributes

- Symbol (Icons) for Attribute 1..9
- Scale for Attributes 1..9
- Name of Attributes 1..9
- Short name of Attributes 1..9
- Description of Attributes 1..9
- Capability level

#### 3.1.3 Charts

Liste of used charts (Selction from list with possibility to add some charts manually).



## 3.2 Question mask

### 3.2.1 Details for a question

This form is almost identical as you might know it from SynQuest. Question Nr and Displayorder are editable

Fields:

QuestionText

Explanation

Definition

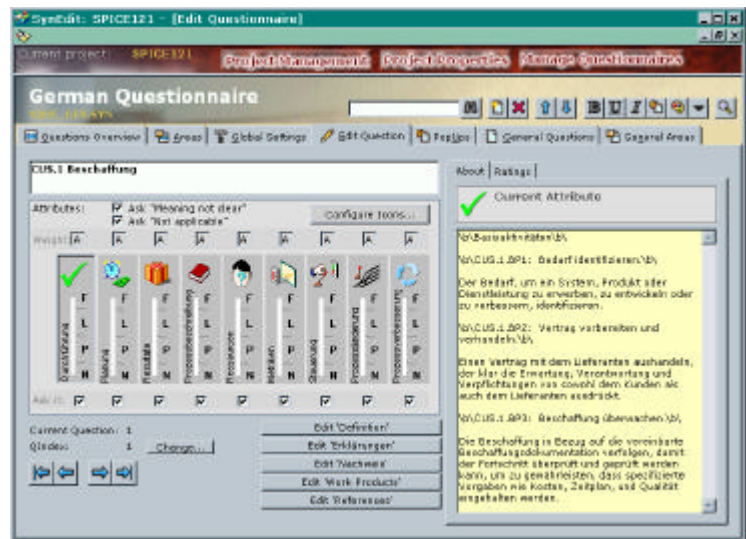
Explanation\_???

Rating\_???

Work Products

References

Additional functions are:



#### 3.2.1.1 Delete current question

#### 3.2.1.2 Insert new question

### 3.2.2 Display order of questions

Questions can be moved upwards and downwards using arrow buttons

### 3.2.3 Areas/Categories

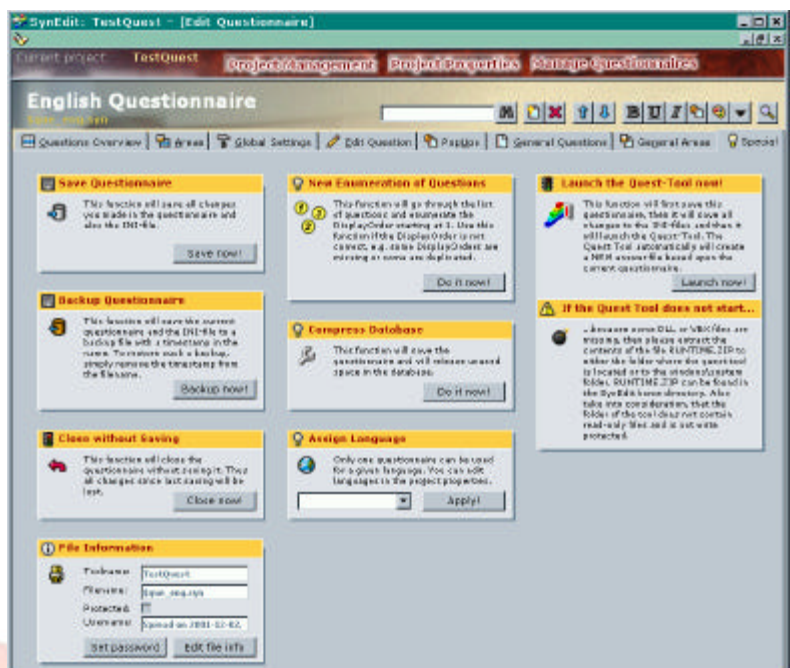
The areas/categories are arranged as a list.

### 3.2.4 Assigning questions to areas/categories

Klick on the area in the list and you can add any question to that area.

### 3.2.5 Special Functions

This form allows you to save the questionnaire, to create backups, close without saving, enter password for protection, compress the database, assign a language or launch the Quest tool to test your questionnaire.



### 3.2.6 Editor for doing translations

Buildt up as a list with two columns. The first column contains the English word which should be translated, the second column contains the translated text. It is also possible to replace the English text (which appears in the tool) into your own English words

